

Burke Central School

Fall 2020 Reopening Plan

Burke Central School Board Approved
August 2021



July 28, 2020

Greetings to all Burke Central Stakeholders:

I'd like to start this letter off with a huge THANK YOU for all that you did to help us continue to educate students through the most challenging and unique time we have ever seen for the education world. The 2019-2020 school year did not end the way we were expecting or wanting it to but, we are proud of the students, staff, families, and community members for making it through the fourth quarter! We were also very excited that our community and district were able to celebrate our Seniors' accomplishments with a graduation exercise that will forever be in our history books.

Our challenge now is planning for what school will look like during the 2020-2021 school year. This is a daunting task as we all realize how the impact and response to COVID-19 have changed rapidly over the past four months. This plan will try to address these challenges while providing a flexible framework to guide our response over the next school year.

For academic, social-emotional, and economic reasons, our district is compelled to strive to return to the in-person, in-school model. Yet, we cannot disregard or overlook the health and safety concerns associated with this virus. The district must provide and consider all practical and safety steps to keep our school from contributing to the spread of this virus in our community.

Our COVID-19 Response Team reviewed input gathered from our surveys sent to school staff, parents and community stakeholders. Our school plan is the result of hundreds of hours of research, critical thinking, modeling and work by our staff and school board.

We would hope and appreciate it if you would take some time to review Burke Central's plan. We encourage everyone to ask questions and communicate their concerns as we move forward. Together we can continue to work and provide safe quality education to our children. Thank you for your time.

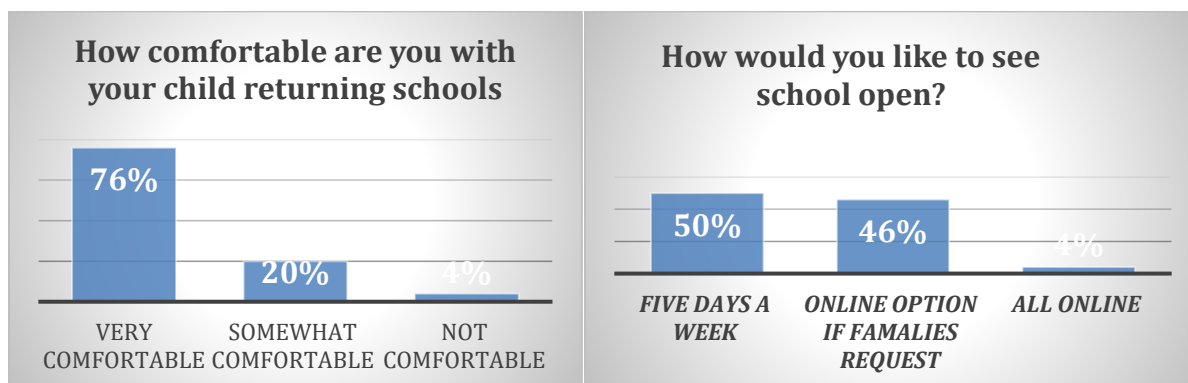
Respectfully,

Superintendent/Principal
School Board President

Burke Central School Restart Meeting Agenda

- I. Opening Remarks
- II. Survey questions for stakeholder
- III. Discussion on plan draft
- IV. Discussion of logistics K-12 School
- V. Other considerations by team

Survey Results



Should all students wear face masks?

RESPONSES-

Yes

8.33%

No

91.67%

Total Respondents: 36

Burke Central School Restart Quick Guide

At the Burke Central School, we believe that it is critically important for all of our students to attend school in person as much as possible. It is our intent to use the state “odometer” for risk level to adjust our practices to align with the risk level in our school district and/or county.



Risk/ Activity	Critical	High	Moderate	Low	New Normal
School	Fully Online	Online- Students needing additional supports in the building with precautions	Online; cohorts or groups may be allowed, in-person and online instruction	Mostly in person high risk or quarantine individuals learning online	School as normal with additional safety routines
Activities	No Activities	Limited - Practices and small group workouts/Mtg	Targeted competitions/Meetings	Practices and competitions with extra precautions	Activities as normal with additional safety routines
Food Service	Additional precautions	Limit Contact - Serve delivered meals	In school and sack lunch available for pickup; Socially Distant lunch breaks	Fairly normal lunch routine. Some “to go” hot meals available for pickup.	Lunch as normal
Cleaning	Minimal: building empty	Clean x2 where people are using the building	Routine cleaning with extra disinfection of high touch/use areas.	Routine cleaning with extra disinfection of high touch/use areas.	Normal cleaning routine with additional disinfection procedures

Burke Central Restart General Guidelines:

- The ratios (people allowed in a learning space) set by the CDC and our Governor will be followed when possible.
- Encourage the use of masks by students and staff-encourage shields for staff
- Encourage good hygiene (handwashing with soap, coughing and sneezing into the elbow)
- Arrange students to allow for maximum social distancing-6 feet whenever possible
- If possible, students should come dressed and ready for events to limit time in locker rooms
- Students not feeling well should not enter the school. Fever over 100.4 degrees will not be allow in
- Keep each student's personal belongings separated
- Ensure adequate supplies to minimize sharing of high touch materials to the extent possible (art supplies, equipment, balls, weights, etc. assigned to a single student) or limit use of supplies and equipment by one group of students at a time and clean and disinfect between uses
- Maintenance staff daily clean and disinfect the rooms/areas used
- Avoid sharing food or drink or personal items among students

From the American Academy of Pediatrics:

School is fundamental to child and adolescent development and well-being and provide our children and adolescents with academic instruction, social and emotional skills, safety, reliable nutrition, physical/speech and mental health therapy, and opportunities for physical activity, among other benefits. These guidelines are provided

acknowledging that our understanding of the SARS-CoV-2 pandemic is changing rapidly.

The Burke Central Restart will consider the following key principles:

- School policies must be **flexible** responding to new information, and administrators must be willing to refine approaches when specific policies are not working.
- It is critically important to develop strategies that can be *revised and adapted* depending on the level of viral transmission in the school and throughout the community and done with close communication with state and/or local public health authorities and recognizing the differences between school districts, including urban, suburban, and rural districts.
- Special considerations and accommodations to account for the diversity of youth should be made, especially for our vulnerable populations, including those who are medically fragile, live in poverty, have developmental challenges, or have special health care needs or disabilities, with the goal of safe return to school.
- No child or adolescents should be excluded from school unless required in order to adhere to local public health mandates or because of unique medical needs. Pediatricians, families, and schools should partner together to collaboratively identify and develop accommodations when needed.

Assumptions & Assurances

Burke School believes:

- **Every student should have the opportunity to engage in learning, regardless of the spread of COVID-19 in our community.**
- **Schools have a vital role in providing safe environments for students, focusing on both social-emotional and physical health.**
- **By working together with educators, staff, health care professionals, parents, students, and community members we can solve most challenges.**

- **Our district will make decisions based on the most current guidance from local, state, and national health care officials.**
- **Our School Board will ensure our plan meets the needs of our students, educators, staff and community.**

Our Planning Team

The Burke Central Return to Learning Plan was crafted and reviewed by a team consisting of the following:

- Educators
- Custodial Staff
- Parents
- Nurse
- Para-Professional
- Secretaries
- School Board member
- School Principals
- Superintendent

Input was gathered by various means to allow for a wide range of input, while maintaining social distancing.

COVID-19 Response Team

This team was gathered to assist in the development and monitoring of the district restart plan. These guiding team members will serve as a voice in how the district responds to COVID-19 during the school year. This plan is designed to address the issues of reopening as well as provide a nimble and responsive process to address issues that may not be recognized today.

Burke Central School's Restart Plan was crafted and reviewed by a team consisting of the following:
Individuals:

Rick Lindblad-Superintendent-Principal
 Julie Termine-Athletic Director-Business Manager-Parent
 Holly Chrest-Assessment Coordinator-Assistant High School Principal
 Alison Howatt- BCA Vice President-Elementary Teacher
 Marcia Durick Elementary Teacher/Parent
 Lynn Lindblad -Teacher-Assistant Principal Elementary-Special Ed Coordinator
 Tim Chrest-Maintenance Staff Member/Lead Custodian
 Megan Kihle-Bus Driver/ Paraprofessional/Parent
 Amanda Evenson Head Cook/Parent
 Stacey Schoemner- First District Health
 Shayla Ryberg-School Board Member
 Amy Nelson – High School Teacher/parent

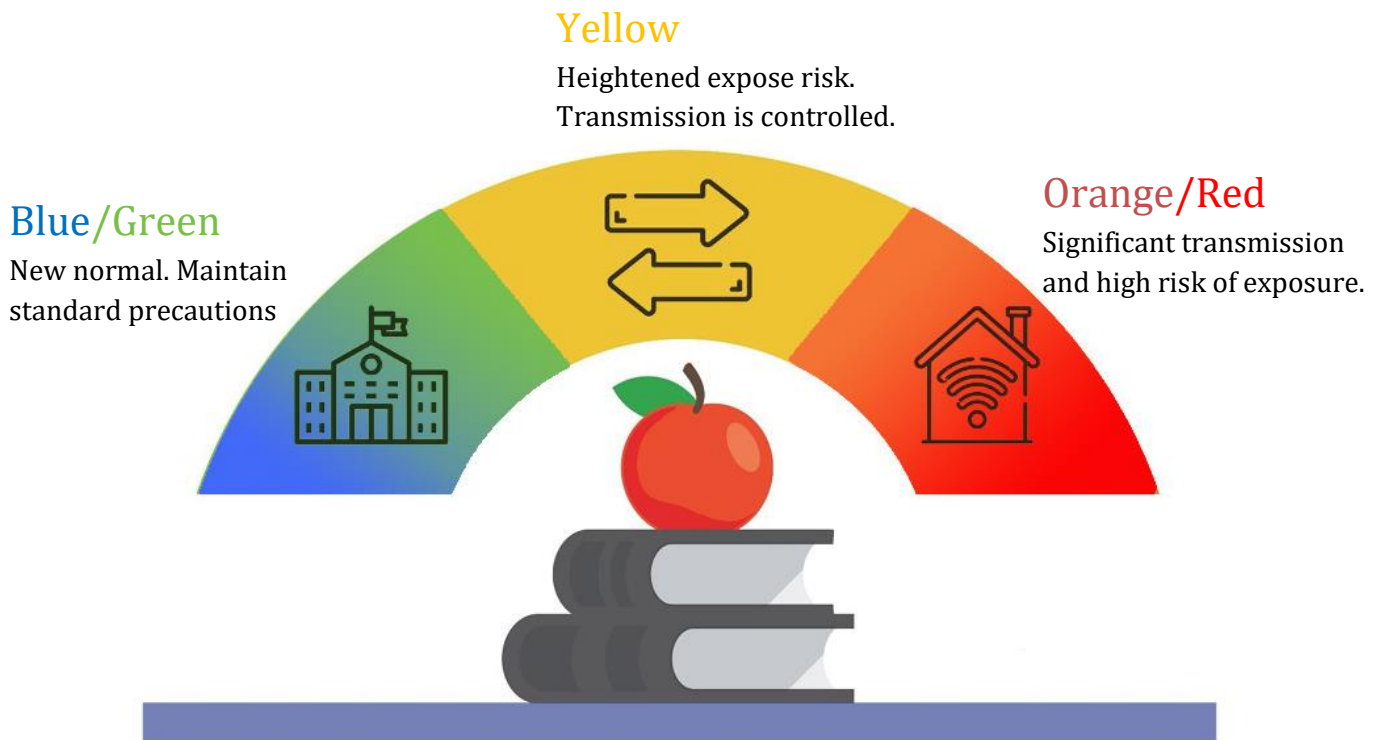
COVID-19 Building Level Coordinators

Burke Central Schools will have a COVID-19 Coordinator who will be responsible for the health and safety preparedness and response planning. Coordinators will make themselves available to the NDDoH 24 hours a day / 7 days a week to respond to phone calls from public health. This position will assist public health in identifying and notifying close contacts in the school setting. The coordinator will report cases of COVID-19, found in the school setting, to health officials and the State Superintendent's office.

The School Superintendent (Rick Lindblad) will assume the role of building-level coordinator. If the coordinator is unable to be reached the secondary contacts will be Julie Termine.

Phases

The following phases will be used to define the community risk level associated with COVID-19. These phases align with the color-coded guidance in the ND Smart Restart Plan. Each level is reported to schools by the NDDoH after rigorous testing and assessment of cases in the community. [ND Smart Restart Plan](#)



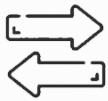
Instructional Models

The instructional models used by the district will be guided, in part, by the risk level of COVID-19 in the community as defined within the phases above. This is a guide as instructional models could be altered based on other factors, such as occupancy levels, age of children, and abilities to move certain classes online.



Traditional Learning

All instruction is delivered in-person with some building and group modifications. Teachers and students maintain a normal daily schedule. Safety precautions are implemented to enhance staff and student safety.



Blended Learning

Students report to school on a modified schedule. Multiple hybrid models of instructional delivery may be appropriate to meet the educational needs through a variety of delivery models.



Distance Learning (List LMS System Used)

All instruction is provided off-campus through the use of distance learning resources or suited to the unique needs of the student.

Health and Safety Guidance

The district strives to provide a healthy and safe environment for all who occupy our schools. The following guidelines are intended to provide a framework for the district's response to COVID-19. Additionally, these resources are available to parents and families to provide ongoing training and education regarding COVID-19.

Resources

Recommendations for schools: [file:///C:/Users/Superintendent2019/Downloads/NDDoH_COVID-19_Recommendations_for_Schools%20\(1\).pdf](file:///C:/Users/Superintendent2019/Downloads/NDDoH_COVID-19_Recommendations_for_Schools%20(1).pdf)

ND Department of Public Instruction - <https://www.nd.gov/dpi/parentscommunity/nddpi-updates-and-guidance-covid-19>

ND Department of Health - <https://www.health.nd.gov/diseases-conditions/coronavirus>

Center for Disease Control and Prevention - <https://www.cdc.gov/coronavirus/2019-nCoV/index.html>

CDC Resources: <https://www.cdc.gov/coronavirus/2019-nCoV/index.html>

NFHS Guidance for Opening Up High School Athletics and Activities:

https://nfhs.org/media/3812287/2020-nfhs-guidance-for-opening-up-high-school-athletics-and-activities-nfhs-smac-may-15_2020-final.pdf

Local Public Health

North Dakota's public health system is decentralized with 28 independent local public health units working in partnership with the North Dakota Department of Health. The 28 local public health units are organized into single or multi-county health districts, city/county health departments or city/county health districts. Seventy-five percent of the local health units serve single county, city or combined city/county jurisdictions, while the other 25 percent serve multi-county jurisdictions. The majority of the multi-county jurisdictions reside in the western part of the state. In this decentralized approach, the units are required to meet state standards and follow state laws and regulations, but they can exercise their own powers and have [administrative authority](#) to make decisions to meet their local needs.

North Dakota local public health units have a long history of providing personal and population based health services to residents in their city and/or county jurisdictions. The local public health infrastructure represents the capacity and expertise necessary to carry out services and programs. Therefore, the health units function differently and offer an array of services. The most common activities and services provided by local public health are child immunizations, adult immunizations, tobacco use preventions, high blood pressure screening, injury prevention screening, blood lead screening and Early and Periodic Screening Diagnosis and Treatment

Best Intentions

Despite taking every reasonable precaution, **there is no guarantee that our school will be without risk** as it relates to COVID-19. The virus will most likely be present on our buses, in our classrooms, and at our activities. In certain situations, social distancing is not possible in a school setting. Our

actions, as outlined in this plan, will not prevent any student or staff member from being in contact with the virus.

Protect Yourself and Others

Wash your hands often

- Wash with soap and water for at least 20 seconds especially after blowing your nose, coughing, or sneezing.
- If soap and water are not available, use hand sanitizer that contains at least 60% alcohol.
- Avoid touching your eyes, nose, and mouth with unwashed hands.
- Students are encouraged to wash their hands often throughout the day.

Avoid close contact

- Keep social distance from others especially important for people who are at a higher risk of getting sick.
- Alternate or modified schedules, adjustments to use of common areas, use of outdoor spaces, and other actions that increase physical separation may be considered.
- The sharing of instructional materials should be limited as much as possible.
- Physical separation when possible and seating charts on buses, one student per seat except those from the same household, will be our goal but cannot be guaranteed.
- Visitors will be required to wear a mask to gain entry into the building.

Cover coughs and sneezes

- Always cover your mouth and nose with a tissue when you cough or sneeze or use the inside of your elbow.
- Throw tissues away and wash hands or use hand sanitizer to prevent spread.

Clean and disinfect

- School staff should clean and disinfect frequently touched surfaces daily.
- Shared materials (not recommended) should be cleaned.
- Classrooms will be cleaned nightly by custodial staff.

Cover your mouth and nose with a cloth face cover when around others.

- The wearing of masks will be recommended within the [ND Smart Restart Guidance](#) guidelines.

- At this point, we will not be requiring masks for students or staff. Guests may be asked to wear masks when entering the school.
- Masks are not required by ND Smart Restart Guidance in the Green or Yellow phases.

Burke Central School COVID-19 PPE Guidance

STAFF	PPE
All staff (other than what is outlined)	Encouraged to wear cloth face coverings Encouraged to wear face coverings on school transportation (bus)
All Students	Encouraged to wear cloth face coverings. Encouraged to wear face coverings if using school transportation (bus)
Public facing staff (i.e. receptionists/clerical) unless plexiglass partition is in place.	Encouraged face shield or cloth face mask
Staff caring for / instructing a student in a small space – small group – for more than 15 minutes. (i.e. Title I, SPED, EL, educator)	Building administrators in consultation with County Health Unit and educator will determine if face coverings or face shield are encouraged . This may be influenced by instructional and learning needs of the student and health considerations of all occupants in the room.
All staff	Encouraged to wear a cloth face covering.
All Students	Encouraged to wear a face mask if they are in the school building for any instructional support.
All staff and students in school bus	Encouraged to wear a face covering

Monitor your health daily

- Be alert for symptoms. Watch for fever, cough, or shortness of breath.
- Parents are asked to screen their children each day before sending them to school. Use the screening guidance provided (see appendix).
- Staff and students who are sick should stay home.
- Temperatures of symptomatic students or staff may be taken at the school office.
- Symptomatic students will be isolated, and their guardians contacted.

Health & Safety Protocols

Monitoring the health of students and staff will be an important component of a safe and healthy educational environment. Burke Central School encourages testing among our employees and students. Burke Central School will take the following measures to aid in the health of all students and staff while they are at school.

Identifying Students & Staff at Higher Risk

- Back to School and enrollment processes will include questions asking families to identify if their child is at-risk, based on a health professionals' diagnosis. This information will be provided to the superintendent (COVID-19 Coordinator) who will contact the family and discuss instructional model options.
- The Superintendent will converse with employees if they feel they are at-risk, based on a health professionals' diagnosis. The Superintendent will work in partnership with the building principal and the employee to coordinate adjustments to the work schedule or workplace, if possible.
- When the NDDoH or our UMDHU inform the district of a student or staff member that is COVID-19 positive that information will be passed on to the Superintendent as allowable within district policy and law.

Isolation & Quarantine

- Isolation – For people who are already sick from the virus. A prevention strategy used to separate people who are sick with the virus from healthy people.
- Quarantine – For people who are not sick but have been exposed to the virus. A prevention strategy used to monitor people who were exposed for a period of time.
- Burke Central School will follow isolation and quarantine guidelines and directives as set by NDDOH and First District Health Unit.

If a student or staff members become sick at school (or school event)

- Student
 - Direct/escort the child to the office.
 - The child shall be provided a facial covering and isolated in the building sick room.
 - Parent/guardian will be contacted to pick up their child.
- Staff
 - Inform your supervisor immediately and wear a face mask/shield until they can be replaced if supervising students at that time.
 - Leave the school building/grounds and consult with a healthcare professional.
- Close Contacts
 - Depending on the group (cohort) the infected student was in, if a student or staff member tests positive for COVID-19, close contacts will be asked to quarantine for 14 days (meaning online school for the class and teacher for that two week period).
 - At this point it is not recommended to shut down the entire school based on one positive case.

Return to School

- When a student or staff member has been isolated or quarantined as directed by NDDoH or First District Health they will be allowed to return to school after being cleared by the NDDoH.

Guidance for Grade Level & School Building Level Closure

This is intended as guidance for COVID-19 Coordinators and school leaders on when to close classrooms, grades, and buildings.

- Close contact is defined as being within 6 ft. of another individual for 15 min or greater.
- If a school is closed for any length of time, the district will determine which mode of instruction will resume.
- First District Health Unit will be consulted for local decision-making.
- NDDoH or the Governor's office may close a school or district at their discretion.

Transportation

"Normal" transportation will not be possible when trying to abide by the guidelines set forth. The school district understands that students will not be able to follow distancing guidelines if all route buses have their normal amount of riders. We ask that parents are diligent about checking temperatures and going through the checklist within this document prior to sending students to school on the bus. It is strongly recommended that when possible, parents bring their children into school and pick them up to avoid bus overcrowding, help us to keep their social distance and get them with their own cohort group.

- Routes may change throughout the year.
- Parents picking up/dropping off students should remain in their vehicles.
- Routes may be suspended during the year if our levels and/or protocols change.

Burke Central School Operational Guidance

GREEN OPENING: LOW RISK RE-OPENING OPERATIONS

All instruction is delivered in-person with some building and group modifications. Teachers and students maintain a normal daily schedule. Safety precautions are implemented to enhance staff and student safety.

Daily Checks & Screening	<ul style="list-style-type: none">• Parents are asked to screen their child/ren each day before sending them to school. Screening guidance is below and will be available on our website as well as our social media. Appendix A is available on our website and social media and will be sent home with each family.• All staff, including subs, will take temperature daily.
Physical Structure	<ul style="list-style-type: none">• Seating/desks will be spaced as far apart as room allows.• Mist sprayers will be used to disinfect larger areas on a regular basis, i.e., playground equipment, lockers, gym, shop, etc.• Sanitizer solution will be present in all rooms for staff to utilize as necessary.• All water fountains will be turned off but touchless bottle fillers will remain working.• Building will be routinely cleaned and disinfected according to CDC guidelines with special focus on high traffic areas.• Signage will be placed throughout the school to continue to educate students, staff, and community about safe protocols in regard to COVID-19.• Classes will be held outside as feasible.• BCS will ensure ventilation systems operate properly and increase circulation of outdoor air as much as possible.• Entrance to the school will be separated: Elementary, Middle and High School.

<p style="text-align: center;">Academic</p>	<ul style="list-style-type: none"> • Accommodations will be made for staff and students who are in a high-risk group or caring for individuals in a high-risk group. • Teaching staff will receive professional development training in effective ways to use current technology to provide a quality blended learning environment. • Choir/Band will be held in the gymnasium to accommodate for social distancing. • Students will receive education in proper hygiene, hand washing, how to wear a facemask, COVID-19 symptoms, what to do when experiencing symptoms, and to stay home when sick. • School re-opening guidelines and training will be provided to all substitute employees of the district. • Students, staff, and others will be required to use hand washing/hand sanitizer when entering the building. • Toys and manipulatives will be sanitized daily. • Attendance will be addressed case by case for required days of attendance.
<p style="text-align: center;">Sick Students and/or Staff</p>	<ul style="list-style-type: none"> • Thermometers will be provided to K-6 teachers and office staff for screening of students, as necessary. • School will keep record of symptomatic students. • Sick students will be moved to the sick room while waiting to be picked up.
<p style="text-align: center;">Personal Protection Equipment (PPE)</p>	<ul style="list-style-type: none"> • Students and staff will be encouraged to wear masks or other PPE but not required. The school will provide re-washable mask and school will clean daily. • Masks/Shields or other PPE will be provided by the school for school personnel. • All non-employees (maintenance, vendors, etc.) will be recommended to wear a mask when in the building during school hours. • Disposable masks will be provided for people visiting the building.

<p>Hand Hygiene And Respiratory Etiquette</p>	<ul style="list-style-type: none"> • Teach and reinforce handwashing with soap and water for at least 20 seconds and increase monitoring to ensure adherence among students and staff. • If soap and water are not readily available, hand sanitizer that contains at least 60% alcohol can be used. • Teach students to cover coughs and sneezes with a tissue or into their elbow. Used tissues should be thrown in the trash and hands washed immediately with soap and water or use of hand sanitizer. • Encourage hand washing/hand sanitizer use at the following time: entrance/exit of the school building; before and after meals/snacks; and after coughing, sneezing, tissue use; leaving and returning to class. • Good personal hygiene will be taught to all grade levels.
<p>School Visitors</p>	<ul style="list-style-type: none"> • Volunteers and non-essential visitors will not be allowed into the building until further notice. • Please Note: First day of school: Students will be dropped off outside. • For PK-K: teachers will greet students at the door and escort them to their class at their appointed time for testing. • All Parent/Teacher Conferences will be held virtually.
<p>Cafeteria</p>	<ul style="list-style-type: none"> • Lunch/breakfast schedules will be staggered to allow for distancing in the lunchroom during meals as feasible. Time will be allotted for cleaning between groups. • All components of the breakfast and lunch program will be served by qualified personnel to individuals. All self-serve options will be eliminated. • Lunch count will be taken in the classrooms by the teachers for grades PK-6, and school personnel will enter students' numbers, not the students. • Campus will remain open for grades 9-12.
<p>Social,</p>	

<p>Emotional and Behavioral</p>	<ul style="list-style-type: none"> • Resources will be provided to staff, parents, and students to help them deal with trauma associated with COVID-19 events. • Staff will report to administration students who may be experiencing trauma due to the circumstances related to the COVID-19 pandemic so proper resources can be provided to the teacher and/or guardian.
<p>Transportation</p>	<ul style="list-style-type: none"> • Buses will be disinfected daily. • Students will be assigned seating using social distance as feasible. • Students will have their temperature check before entering the bus
<p>Business</p>	<ul style="list-style-type: none"> • School Officials will work with appropriate persons to ensure that technology status and operational needs are adequate to meet the needs for the students and staff and to be able to conduct business as needed. • School officials will work with teachers' union in the event that change in working conditions or other requirements are placed on teachers due to the pandemic.
<p>Extra-Curricular Activities, and Athletics</p>	<ul style="list-style-type: none"> • BCS will follow guidance and directives from ND High School Activities Association for all extracurricular activities. • Proper distancing will be applied on all bus activity and sport trips as feasible. • School Assemblies and other large gathering activities will be evaluated as they occur and determine if they are practical given the current state of the pandemic at the time.
<p>Priorities for Green Re-opening</p>	<ul style="list-style-type: none"> • Ensure students and staff who are sick or showing symptoms stay at home. • Ensure open communication between school, parents and First District Health Unit.

YELLOW OPENING: MODERATE LEVEL OPERATIONS

Students report to school on a modified schedule. Based on guidance from state and local health officials,

Below are additions and changes to practices and priorities in the Green Operations.

Academic	<ul style="list-style-type: none">• Part time in the classroom and part time in another area in the school on a device participating in the class via distance. Circumstances and age will factor into this decision.• Students shall engage in learning opportunities online using the classroom remote learning management system on days they are not in school.• Designated areas will be supported by teachers and instructional aides.
Physical Structure	<ul style="list-style-type: none">• Class size will be limited per the recommendation of state and local health officials.• Alternate areas will be set up for students participating in the classroom on a device.
Personal Protection Equipment (PPE)	<ul style="list-style-type: none">• Students and Staff will be encouraged to wear masks in the hallways.• Temperatures will be taken upon entering the building.
Transportation	<ul style="list-style-type: none">• Transportation will be limited to allow for distancing on the bus.• Temperatures will be taken upon entering the bus.
Cafeteria	<ul style="list-style-type: none">• Meals will be delivered to classrooms; students will not eat in the cafeteria.• School campus will be closed for lunch.

RED/ORANGE OPENING: HIGH AND CRITICAL RISK OPERATIONS

In extreme conditions, which could include a local or state stay-at-home order, BCS will close schools and shift to remote learning for all students. All instruction is provided off-campus through the use of distance learning resources or suited to the unique needs of the student.

Physical Structure	<ul style="list-style-type: none"> • Closed to general public. • Possible opportunities for in person small group instruction or intervention.
Academic	<ul style="list-style-type: none"> • Rigorous remote instruction on key learning essentials in each grade and content area. • Every student will be provided a device at home. • Technology and Homework Helpdesks will be available. • Clear expectations and communication with students and families. • Traditional grades and accountability will be followed. • Daily attendance will be required with exceptions addressed case by case.
Cafeteria	<ul style="list-style-type: none"> • Remote lunch delivery will begin. • Breakfast and lunch charges will be the same as traditional school.
Priorities in Red and Orange	<ul style="list-style-type: none"> • Reduce the risk of further community spread by closing schools.

Updates June 14th 2021

Return to In-person Instruction and Continuity of Services Plan

Section 2001(i) of the American Rescue Plan (ARP) requires all LEAs receiving ARP ESSER funds, within 30 days of receiving the funds, to make publicly available on its website a plan for the safe return to in-person instruction and continuity of services. Before making the plan publicly available, the LEA must seek public comment on the plan and take such input into consideration.

Due Date

- The NDDPI must make the ESSER III funds available to LEAs by May 24, 2021, which means they have access to their signed grant award/contract by that date. Therefore, 30 days from May 24, is the deadline by which all districts must have their plan posted on their website (June 24, 2021).

The Plan Must Include the Following Information

- How the LEA will ensure continuity of services

- How the LEA is addressing the students' academic needs, and students' and staffs' social, emotional, mental health, and other needs, which may include student health and food services; and

- How the LEA has adopted policies and a description of any such policies on each of the strategies listed below:
 - Universal and correct wearing of masks
 - Physical distancing (e.g., including use of cohorts/podding)
 - Handwashing and respiratory etiquette
 - Cleaning and maintain healthy facilities, including improving ventilation
 - Contact tracing in combination with isolation and quarantine, in collaboration with the state, local, territorial, or tribal health departments
 - Diagnostic and screening testing
 - Efforts to provide vaccinations to educators, other staff, and students, if eligible
 - Appropriate accommodations for children with disabilities with respect to the health and safety policies

Additional Requirement

- Districts need to update the In-Person Instruction and Continuity of Services Plan at least every six months through September 20, 2024, and must seek ongoing public input on the plan.

- Even if districts claim all their ESSER III funding, the requirement to update this plan every six months still applies.

Other Resources

- CDC Considerations for Schools <https://www.cdc.gov/coronavirus/2019-ncov/community/schools-childcare/schools.html>
- CDC Cleaning and Disinfecting <https://www.cdc.gov/coronavirus/2019-ncov/community/clean-disinfect/index.html>
- CDC Print Resources <https://www.cdc.gov/coronavirus/2019-ncov/communication/print-resources.html?Sort=Date%3A%3Adesc>
- CDC Face Coverings <https://www.cdc.gov/coronavirus/2019-ncov/prevent-getting-sick/diy-cloth-face-coverings.html>
- CDC Handwashing Information <https://www.cdc.gov/handwashing/index.html>
- CDC Social Distancing <https://www.cdc.gov/coronavirus/2019-ncov/prevent-getting-sick/social-distancing.html>
- CDC Isolation and Quarantine Guidelines https://www.cdc.gov/coronavirus/2019-ncov/if-you-are-sick/quarantine.html?CDC_AA_refVal=https%3A%2F%2Fwww.cdc.gov%2Fcoronavirus%2F2019-ncov%2Fif-you-are-sick%2Fquarantine-isolation.html
- CDC End of Isolation <https://www.cdc.gov/coronavirus/2019-ncov/if-you-are-sick/end-home-isolation.html>

APPENDIX A

BEFORE SCHOOL!

Parents are asked to review this daily health checklist by answering these questions before sending their child to school.
(Parents do not need to send the questionnaire to school)

Has your child had close contact with a confirmed case of COVID-19 in the past 14 days?
Yes____ No____

Does your child have a new or worsening shortness of breath?
Yes____ No____

Does your child have a new or worsening cough?
Yes____ No____

Does your child have a fever of 100.4 or greater?
Yes____ No____

Does your child have chills?
Yes____ No____

Does your child have a sore throat?
Yes____ No____

Does your child have a new loss of taste or smell?
Yes____ No____

If **YES** to any of the questions
STOP!

If you are able to answer
NO to all questions, go to
school.

Do not send your child to school.
Contact your healthcare provider.
Contact your child's school to
inform them of your child's
absence.